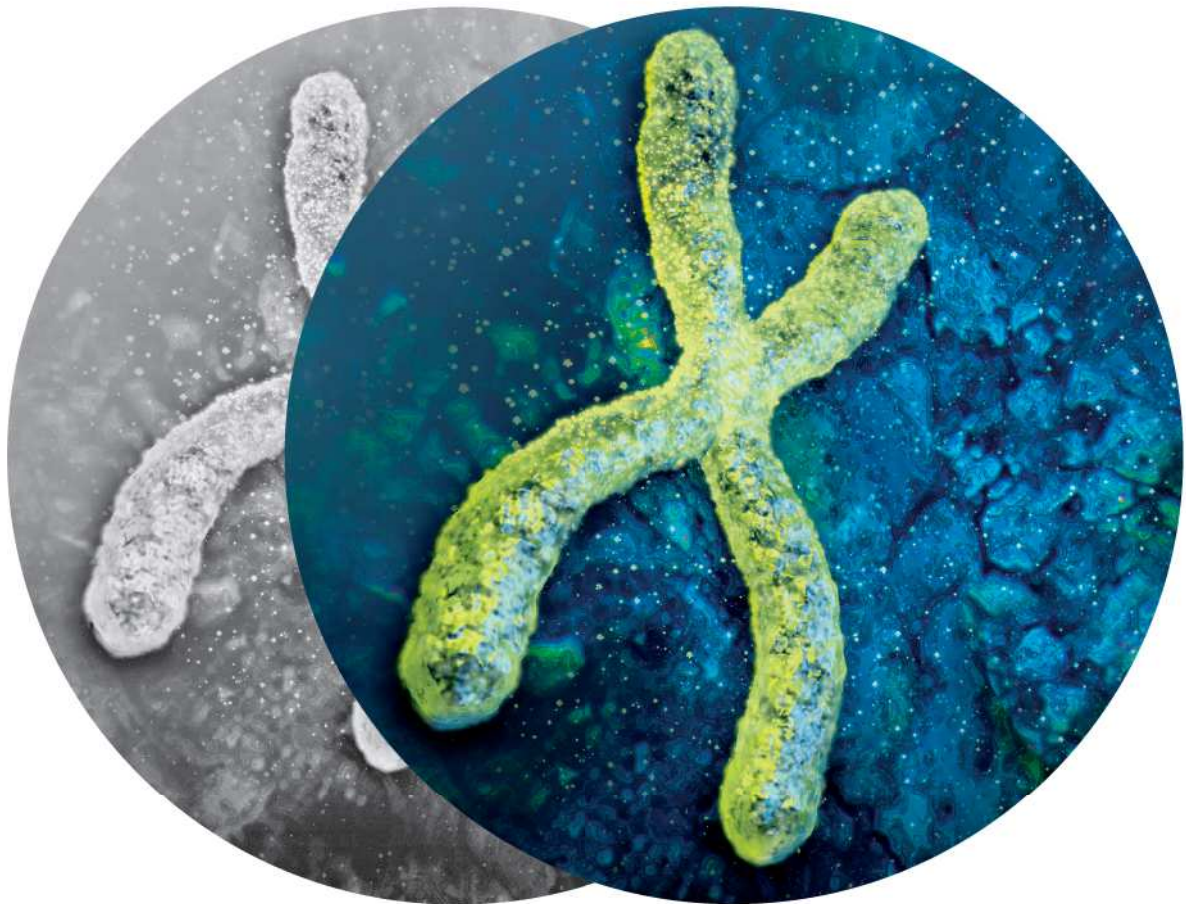


Statistic outline of French genetic organisation 2015



February [2016]

› Statistic outline of French genetic organisation [2015]

› Livestock

Species	Total Number	% registred	Animals in performance recording	Number of inseminated females
Dairy cows	3 742 000	69,8	2 604 891	Cows 2 649 533 Heifers 968 019
Beef cows	4 090 000	23,3	962 434	Cows 479 342 Heifers 255 830
Dairy sheep*	1 552 000	54,0	844 746	501 743
Meat sheep	3 904 000	8,5	333 600	156 935
Goats	856 000	24,5	306 246	68 546

* 2015 data

Sources : Institut de l'Élevage, ALLICE, FCEL, ANIO, CNBL, BDNI, SSP, CAPGENES

The French genetic organisation for ruminants is characterized by :

- › involvement of a large number of breeders (approximately 100 000) in the selection of the various breeds,
- › very wide bases of selection (registration and performance recording for a great number of animals),
- › an intensive progeny testing of AI males, which is widely taken over by genomic evaluation,
- › a high genetic level,
- › a significant genetic progress in all breeds and species.

Within the framework of a system of Quality Management, the breeders organisations combine their means and skills to provide farmers reliable results to lead the selection of their breeds.

N.B. - Except particular indications, the figures refer to the calendar year 2014.
- Raw performances being obtained in different environnements, direct comparison between breeds should be avoided.

› Dairy Cattle

Breeds	Total number of cows	Recorded cows	Progeny tested bulls	Bulls marketed after evaluation	AI*
Prim'holstein	2 474 728	1 740 283	8	185	4 051 067
Montbéliarde	647 935	440 262	96	128	828 197
Normande	356 834	229 011	6	80	523 455
Abondance	47 883	23 414	17	5	46 162
Brune	25 901	17 380	-	5	48 987
Simmental Française	25 593	17 096	1	4	44 024
Pie rouge	14 802	10 364	-	8	37 083
Tarentaise	13 500	7 561	12	4	14 371

* AI : Inseminations

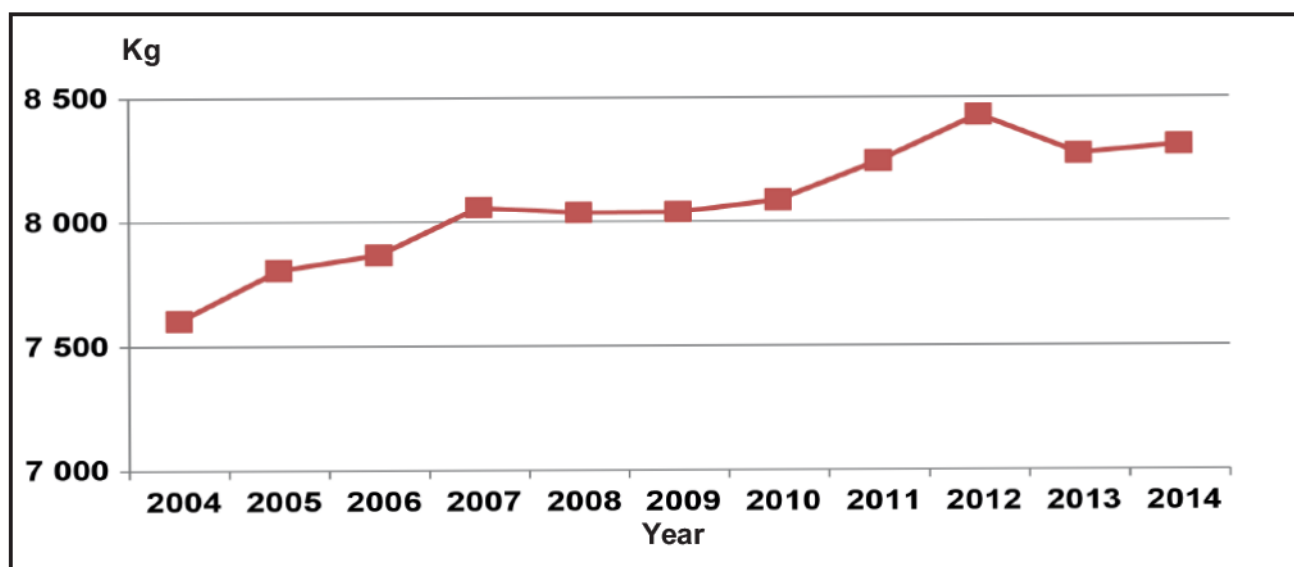
Sources : Institut de l'Élevage, ALLICE, FCEL, BDNI

› Milk recording 2014 (305 days lactations adjusted to adult level)

Breeds	Qualified Lactations	Lactation length kg	Milk yield kg	Fat kg	Fat ‰	Protein yield kg	Protein ‰	Crude Protein ‰
Prim'holstein	1 718 590	353	9 013	347	38,5	281	31,2	32,8
Montbéliarde	435 538	311	7 106	273	38,4	232	32,7	34,4
Normande	225 836	324	6 575	273	41,6	225	34,2	36,0
Abondance	23 183	298	5 544	204	36,8	184	33,2	34,9
Brune	17 191	338	7 045	289	41,1	237	33,7	35,5
Simmental Française	16 975	305	6 303	251	39,8	211	33,6	35,3
Pie rouge	10 249	331	7 773	326	41,9	253	32,6	34,3
Tarentaise	7 510	279	4 533	166	36,6	147	32,4	34,1
All Breeds	2 572 024	340	8 309	322	38,8	263	31,7	33,4

Sources : Institut de l'Élevage, FCEL

› Evolution of the average production (305 days lactations adjusted to adult level)



Sources : Institut de l'Élevage, FCEL

› Genetic and phenotypic trend (recorded cows)
(2004-2014)

Breeds	Progress on 10 years	Milk kg	Fat ‰	Protein ‰
Prim'holstein	Phenotypic Genetic	+ 928	-0,9	+0,0
		+ 926	-1,4	+0,3
Montbéliarde	Phenotypic Genetic	+ 558	-0,4	+0,2
		+ 691	-0,3	+0,3
Normande	Phenotypic Genetic	+ 642	-0,8	+0,1
		+ 727	-0,1	+0,6
Abondance	Phenotypic Genetic	+ 214	+0,1	+0,4
		+ 274	-0,1	+0,2
Brune	Phenotypic Genetic	+ 510	-0,1	+0,3
		+ 457	+0,2	+0,5
Simmental Française	Phenotypic Genetic	+ 454	-0,1	+0,4
		+ 593	+0,0	+0,3
Pie Rouge	Phenotypic Genetic	+ 801	+0,1	+0,5
		+ 470	+0,1	+0,5
Tarentaise	Phenotypic Genetic	+ 205	+0,9	+0,4
		+ 421	+0,4	+0,2

Sources : Institut de l'Élevage, INRA

› Beef Cattle

Breeds	Total number of cows	Recorded cows *	Performance tested bulls *	Progeny tested bulls *	AI *	
					Pure breed	Crossing
Charolaise	1 562 786	377 786	765	74	388 241	302 996
Limousine	1 067 563	252 369	872	27	131 927	173 163
Blonde d'Aquitaine	519 110	154 943	260	20	157 262	40 395
Salers	207 389	51 940	92	-	15 019	4 150
Aubrac	170 753	66 277	129	-	17 390	3 313
Parthenaise	43 087	22 368	93	-	16 876	3 488
Rouge des Prés	38 848	18 327	72	-	11 974	1 311
Gasconne	17 997	8 176	81	-	2 136	907
Bazadaise	3 082	1 794	6	-	1 111	3 599
INRA 95	-	-	10	-	-	89 213
Total of 10	3 630 615	953 980	2 380	121	741 936	622 535

* 2014 campaign data

Sources : Institut de l'Élevage, ALLICE, FCEL, SCEES, BDNI

› Beef recording

Breeds	Weight 210 days (kg)		Weight at 1 year (kg)	
	<i>Calves born during campaign 2014</i>		<i>Calves born during campaign 2011</i>	
	Males	Females	Males	Females
Charolaise	303	271	515	393
Limousine	290	262	485	371
Blonde d'Aquitaine	299	274	518	394
Salers	274	242	452	348
Aubrac	282	244	428	343
Parthenaise	274	245	487	353
Rouge des prés	294	271	508	386
Gasconne	251	228	-	318
Bazadaise	247	225	347	327

Sources : Institut de l'Élevage, FCEL

› Dairy sheep

Breeds	Total number of ewes *	Recorded ewes *	Performance tested rams *	Progeny tested rams *	AI *
Lacaune	1 016 000	662 358	2 177	290**	407 787
Pyreneens breeds					
-Basco-béarnaise	83 000	30 466	75	44	14 802
-Manech tête noire	80 000	20 448	52	29	11 063
-Manech tête rousse	288 000	102 006	232	172	61 458
Corse	85 000	29 468	364	20	6 633
Total	1 552 000	844 746	2 900	555	501 743

* 2015 Data - ** Genomics rams

Sources : Institut de l'Élevage, ANIO, CNBL, SIEOL

› Dairy sheep recording (official milk recording)

Breeds	Number of recorded ewes	Lactation length	Milk yield (liter)
Lacaune	156 206	170	298,5
Basco-béarnaise	20 796	151	193,5
Manech tête noire	8 632	149	160,8
Manech tête rousse	66 047	161	215,3
Corse	14 557	184	142,6

Sources : Institut de l'Élevage, CNBL, SIEOL

› Meat sheep

Breeds	Total number ewes *	Recorded ewes *	Performance tested rams	Progeny tested rams	AI
Specialized meat breeds	1 054 000**	81 850	1 264	73 (meat quality)	180 936
Hardy meat breeds	1 327 400**	215 636	2 411	59 (meat quality) 61 (maternal quality)	131 733
Meat cross-breeds	1 522 600**	36 114	-	-	-
Total	3 940 000	333 600	3 675	193	312 669

* 2014 campaign Data

** Estimation

Specialized meat breeds : Berrichon du Cher, Charmoise, Charollaise, Ile de France, Rouge de l'ouest, Suffolk, Texel, Vendéenne...

Hardy meat breeds : Blanc du Massif Central, Caussenarde du Lot, Lacaune, Mérinos d'Arles, Noire du Velay, Préalpes du sud, Rava, Romane, Tarasconnaise...

Sources : Institut de l'Élevage, ANIO

› Results for 10 main breeds (2014)

Breeds	Number of lambing	Ewes					
		Prolificity ewes natural oestrus	Prolificity ewes induced oestrus	30 d.Std weight males simples kg	30 d.Std weight males twins kg	70 d.Std weight males simples kg	70 d.Std weight males twins kg
Causse du Lot	32 321	1,58	1,77	11,6	9,8	-	-
Blanc Massif Central	28 904	1,51	1,69	13,0	11,1	28,7	24,3
Romane (INRA 401)	23 169	2,14	2,03	13,1	11,0	27,8	23,6
Ile de France	21 882	1,74	1,96	14,5	12,4	28,9	25,8
Lacaune viande	16 808	1,84	1,93	13,4	11,4	-	-
Mouton Vendéen	14 844	1,73	1,90	13,3	11,1	25,9	23,3
Mérinos d'Arles	14 562	1,21	1,53	12,1	9,8	-	-
Mouton Charollais	11 969	1,77	1,9	15,9	13,1	30,1	25,6
Tarasconnaise	9 840	1,21	1,42	12,0	9,8	-	-
Limousine	9 164	1,42	1,75	12,3	10,1	-	-

Sources : Institut de l'Élevage, ANIO

> Goats

Breeds	Total number of goats	Recorded goats	Progeny tested bucks	AI
Alpine	479 000	171 366	44	42 936
Saanen	351 000	125 568	36	25 568
Other breeds	26 000	9 312	-	42
Total	856 000	306 246	80	68 546

Sources : Institut de l'Élevage, ALLICE, FCEL, CAPGENES

> Results of goat milk recording (2014)

Breeds	Recorded goats	Lactation length	Milk yield kg	Fat kg	Fat ‰	Protein kg	Protein ‰
Alpine	155 821	294	891	33,4	37,5	29,6	33,2
Saanen	110 645	306	945	33,6	35,6	30,3	32,0

Sources : Institut de l'Élevage, FCEL, CAPGENES

Published in February 2016 by

France Génétique Élevage

149 rue de Bercy - 75595 Paris CEDEX 12

Tel 33 (0) 1 40 04 52 02 - Fax 33 (0) 1 40 04 52 99

france-genetique-elevage@france-genetique-elevage.fr

www.france-genetique-elevage.org



Realization : Semiha Peksoy (Institut de l'Élevage)

Photo credit : La Chèvre - Pâtre - P. Pulvéry - D.R.

réf. 0016200002 - ISBN 978-2-36343-700-6